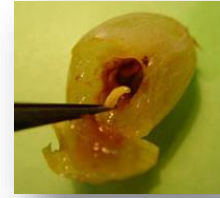




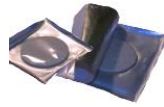




Technical Bulletin for: Mediterranean Fruit Fly

Ceratitis capitata (Wiedemann) • Diptera: Tephritidae • CERCAP



DISTRIBUTION	Africa, Southern Asia and Europe, South and Central America, Pacific Islands, USA.
HOSTS	More than 260 different fruits, flowers, nuts and vegetables
DESCRIPTION	
Adult Moth	Body is yellowish with a tinge of brown 1/6 to 1/5 of an inch long.
Larvae	Elongate, cream colored, cylindrical maggot-shaped. First larval stage 1/25 of an inch by third larval stage, they range between 1/4 and 1/3 inch long.
Eggs	Shiny white about 0.04 inches long and very slender, laid under skin of fruit that is just about to ripen.
LIFE HISTORY	Female lays 2 to 10 eggs. Eggs hatch in 1½ to 3 days in warm weather. Larvae develop in 6 to 26 days. Adults emerge after 6 to 13 days as pupae typically in soil 1 to 2 inches below the surface.

MONITORING INFORMATION

LURE ACTIVE INGREDIENTS, SUBSTRATE & FIELD LIFE	<p>Male: Trimedlure on coaster lure packet. Peel the lure apart to activate.</p>  <p>Female: 2-components food lure. Cut upper corner of lure to activate.</p>  <p>Lure longevity for both: forty-five (45) days.</p>
TRAP TO USE	<p>Male: Yellow Card or McPhail Trap.</p>   <p>Female: McPhail or BioTrap. Place the lure upright in the trap along with DDVP strip</p> 
MONITORING STRATEGY	Place the trap in the warmest part of the tree in open shade. Traps should be placed in the upper 1/2 of the tree canopy, about halfway between the trunk and the outer edge of the foliage. Do not place trap where the entrance is blocked by foliage. Maintain a space free of foliage 12 to 18 inches around the trap. However, foliage and fruit should surround the trap beyond that distance. Do not hang traps below the foliage canopy. Traps should not be placed closer than four feet to the ground. For mass trapping use 50 traps per ha.
CULTURAL & PHYSICAL CONTROL	Field sanitation is the key to cultural control. Destroy all infested or unmarketable fruit. Destroyed fruit should be buried at least three feet under the soil with a layer of lime on top to kill larvae.

Alpha Scents, Inc.
insect monitoring systems

Alpha Scents, Inc., 1089 Willamette Falls Drive, West Linn, OR 97068
TEL: 503-342-8611 • FAX: 314-271-7297 • sales@alphascents.com • www.alphascents.com