



Protocol for Assembling Milk Carton Pheromone Traps Used in the STS Program Area for Detection of Gypsy Moth (*Lymantria dispar*)



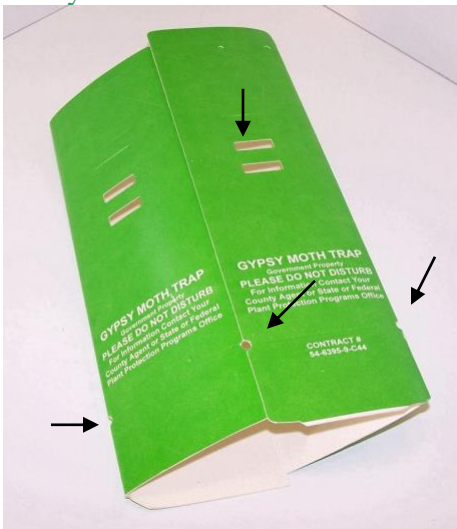
According to STS protocols- Milk Carton traps shall be used where a previous year's trap locations caught 5 or more male moths. Each trap will contain an approved pheromone lure and a 1-inch by 4-inch dichlorvos pesticide strip (registered as Vaporlure II).

1. Trap Assembly

Materials for Assembling Milk-Carton traps:

- Trap Body
- Trap Hood
- Seven inch twist tie (available in most garden stores)
- Disparlure dispenser (lure string)
- DDVP strip (also called Vapor strip)
- Stapling pliers
- Coat hangers, flexible wire or cotton string (string not favorable because of the tendency to spin with the wind)

Assembly Procedures:

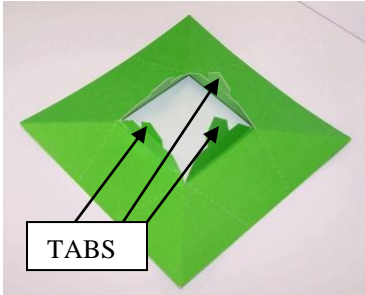


Pop out the drain holes and the entrance windows in trap body.

Note: this must be accomplished to prevent excess moisture from accumulating within the trap and compromising the trap structure



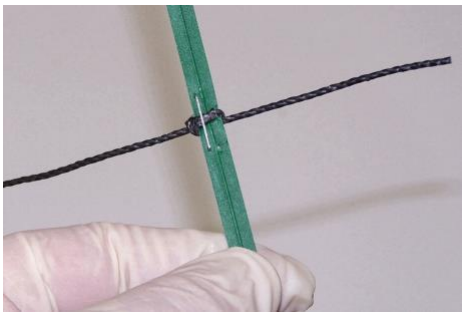
Staple bottom flaps to secure the trap bottom.



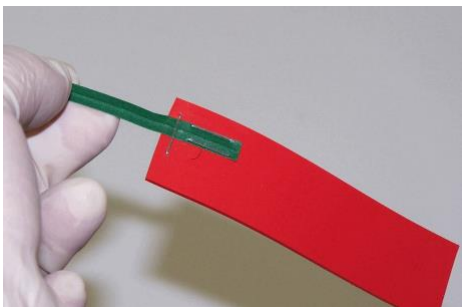
Open hood and then insert and staple to trap body making sure all four hood tabs are tucked inside the perforations of the trap body



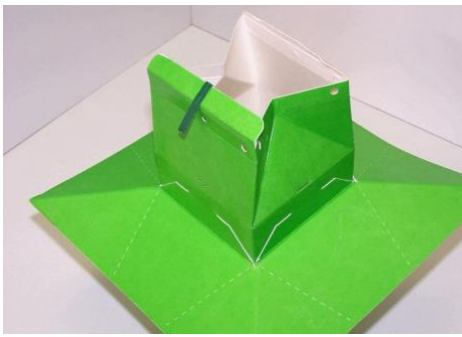
Prepare the lure and DDVP strip for installation; Vaportape (DDVP strip), Disparlure (lure string) and 7 inch twist tie.



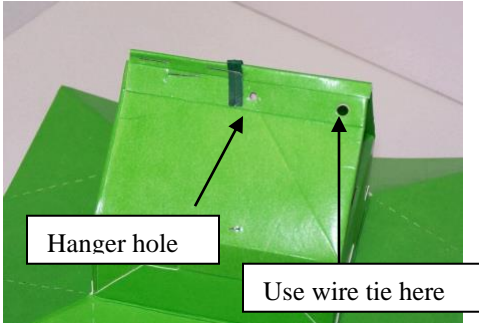
Attach lure to twist tie with stapler pliers



Attach Vaportape to twist tie with staple pliers



Place a one inch bend at the top of the twist tie and insert lure assembly into the center of the trap body



Staple the lid closed (note: if traps are to be midseason checked, only staple one side/half of the lid for ease of inspection. A smaller twist tie or spring type paper clip can be used to hold flaps closed)



When finished, the inside of the trap should have the majority of the lure hanging over the entrance holes of the trap



When completed, the trap should be hung/affixed to a suitable host type at eye level with wire or string (wire is preferred)