

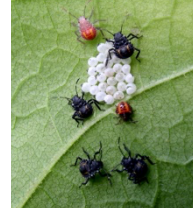


Technical Bulletin

Brown Marmorated Stink Bug


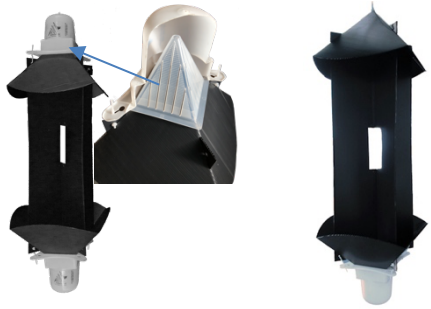
Halyomorpha halys (Stål) • Hemiptera: Pentatomidae

(Product Code: HALHAL-12)



DISTRIBUTION	Native to Eastern Asia; now present Mid-Atlantic and portions of the western United States
HOSTS	Highly polyphagous. Wide variety of orchard crops, ornamentals, small fruit, field crops. Nuisance in buildings and households.
DESCRIPTION	
Adult	Mottled brown shield shaped body approximately $\frac{9}{16}$ inch (15 mm) long. Abdominal edges and antennae have alternating light and dark bands.
Nymphs	Five nymphal instars (molts), each showing progressively darkening from yellow-red to brown to black
Eggs	Light green eggs are elliptical $\frac{3}{32} \times \frac{1}{16}$ inch (1.6 x 1.3 mm) laid on the underside of leaves in clusters of 20-30.
LIFE HISTORY	Two generations per year. Adults overwinter in protective spaces in a sleep-like state. They emerge in March-April and begin mating within two weeks. They mate multiple times. During their lifetime, females deposit 400-500 eggs. Nymphs emerge in June and are present during the summer. Adults feed until September-October, then seek protective overwintering sites.

MONITORING INFORMATION

LURE ACTIVE INGREDIENTS, SUBSTRATE & FIELD LIFE	2-parts, 2-component, 12-Week coaster lure packet (Note: lure works best in late summer/early fall)	
TRAP TO USE	Brown Marmorated Stink Bug Trap, Teflon coated Panel Trap or Clear Sticky Trap	
MONITORING STRATEGY	Place traps on the edge of the crop. The late season capture of BMSB adults and nymphs (juvenile stages of stink bug) by traps baited with pheromone for two other species - Asian Stink Bug, <i>Plautia stali</i> and Harlequin Bug, <i>Murgantia histrionica</i> . These two species are good indicators for the presence (or absence) of BMSB. A 12-Week lure (sold separately) is required and easily attached. Check with Cooperative Extension or your Master Gardener for local information and specific recommendations regarding trapping and monitoring.	
CULTURAL & PHYSICAL CONTROL	Mechanical exclusion can help prevent bugs from entering structures. Hand picking bugs, sweeping into drowning buckets and constant monitoring are suggested management strategies.	



Alpha Scents, Inc.

Insect Monitoring Systems

360 S. Sequoia Pkwy., Canby, OR 97013

TEL: 503-342-8611 • FAX: 314-271-7297 • sales@alphascents.com • www.alphascents.com