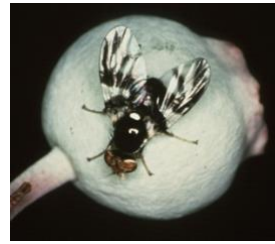







Technical Bulletin for: Blueberry Maggot

Rhagoletis mendax (Curran) • Diptera, *Tephritidae* • RHAMEN



DISTRIBUTION	North America; primarily northeastern and north central United States as well as Canada.
HOSTS	Various species of blueberry, huckleberry, lingonberry and dangleberry.
DESCRIPTION	
ADULT	Adults have a length of 3 to 4 mm. They are black with a white spot at the tip and a white stripe along each side; abdomen with fine white bands separating segments; wing length 3 to 4 mm, with conspicuous black bands.
LARVAE	White, 5 to 6 mm in length.
EGGS	White and elongated.
LIFE HISTORY	Blueberry maggots overwinter as pupae in the soil. Adults will appear late spring to early summer depending on temperature. Adults have a pre-reproductive period of one to two weeks. Females produce 25 to 100 eggs over a period of 15 to 30 days. Larvae feed in the fruit pulp for period up to 3 weeks. After feeding, the larvae drop to the ground, enter the soil, and pupate several centimeters below the surface. In northern states, most pupae overwinter only until the following season, but some pupae may remain in the soil for up to five years before metamorphosing to the adult stage.

MONITORING INFORMATION

LURE ACTIVE INGREDIENT, SUBSTRATE & FIELD LIFE	Ammonium Carbonate in a 1.4 mil PE pouch. Field life: Twelve (12) weeks. 
TRAP TO USE	Yellow Card, Double-sided or Back-folding  
MONITORING STRATEGY	Hang traps between knee and waist level. Traps should be placed near fruit in the shady part of the plant. Use 2 to 4 traps per acre. Check with Cooperative Extension or Master Gardener for local information and recommendations.
CULTURAL & PHYSICAL CONTROLS	Sites where there are large bushes that provide shade for much of the day seem to be preferred by blueberry maggots.

Alpha Scents, Inc.
insect monitoring systems

Alpha Scents, Inc., 360 S. Sequoia Pkwy. Canby, OR 97013
TEL: 503-342-8611 • FAX: 314-271-7297 • sales@alphascents.com • www.alphascents.com