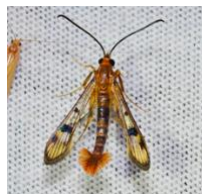






Technical Bulletin for: Maple Callus Borer

Synanthedon acerni (Clemens) • Lepidoptera, Sesilidae • SACERN



DISTRIBUTION	Western Canada, New England, mid-Atlantic region, The Midwest
HOSTS	Various species of maple, mainly Silver Maple.
DESCRIPTION	
Adult Moth	Wasplike with a wingspan of 18-27 mm. Wings are mostly transparent with bluish black markings. Head & thorax are reddish orange w/ white and black markings, antennae bluish black. Abdomen varies between black with orange markings and orange with black markings.
Larvae	White with dark brown head and light brown thoracic shield and spiracles. Mature larvae grow to between 12 and 19 mm long.
Eggs	
LIFE HISTORY	Moths emerge early in the morning from April to July and swarm about tree trunks. Eggs are laid on roughened bark, especially wounds. Young larvae burrow in bark and cambium and prefer succulent callus tissue at the interface of healing wounds. Tunnels are kept partially filled with frass. Larvae overwinter within burrows and pupate under bark in spring. Nearly finished pupae protrude partially out of the trunk. 1 generation per year is possible.

MONITORING INFORMATION

LURE ACTIVE INGREDIENTS, SUBSTRATE & FIELD LIFE	E2-Z13-18Ac and E3-Z13-18Ac in a Red Rubber Septum. Lure longevity: Thirty (30) days.	
TRAP TO USE	Paper/Plastic Delta Trap	
MONITORING STRATEGY	Hang traps near affected trees April through July. Check with Local Forestry Service for further information and recommendations.	
CULTURAL & PHYSICAL CONTROL	Check health of trees, remove and destroy seriously infested areas of the trunk, and wounds painted with tree wound paint. Artificial control in forests is usually not feasible.	

Alpha Scents, Inc.
insect monitoring systems

Alpha Scents, Inc., 360 S. Sequoia Pkwy. Canby, OR 97013
TEL: 503-342-8611 • FAX: 314-271-7297 • sales@alphascents.com • www.alphascents.com